

CIMA+ ASSEMBLY OF PARTNERS

BOARD OF DIRECTORS

Réal Plourde†, P.Eng., Chairman of the Board

François Plourde, P.Eng.

Gérard Geoffrion†, MBA, ICD.D

Michel LaPalme, B.A.Sc.

Réjean Massé, P.Eng.

Josée Morin†, P.Eng., MBA

Richard Régimbald, P.Eng., MBA

GOVERNANCE AND ETHICS COMMITTEE *

Luc Séguin, P.Eng, Partner, Gatineau, President of the GEC

Michel Séguin, Ph.D., CHRP, Ethics Consultant

Olivier Gauthier, P.Eng., PMP, Partner, Rimouski

Marie-Claude Michaud, P.Eng., M.A.Sc., Partner, Montréal

Timothée Lescop, P.Eng., M.A.Sc., Partner, Sherbrooke

Josée Morin†, P.Eng., MBA

Migo Kelada, P.Eng., LEED AP, Partner, Edmonton

AUDIT COMMITTEE

Gérard Geoffrion†, MBA, ICD.D, President of the Audit Committee

Réjean Massé, P.Eng.

Réal Plourde†, P.Eng.

HUMAN RESOURCES AND COMPENSATION COMMITTEE

Josée Morin†, P.Eng., MBA, President of the Committee

Réjean Massé, P.Eng.

Gérard Geoffrion†, MBA, ICD.D

EXECUTIVE COMMITTEE

François Plourde, P.Eng.,
President and Chief Executive Officer

Denis Thivierge, P.Eng.,
Chief Operating and Financial Officer

Suzanne Demeules, P.Eng., DESS,
Vice President

Denis Gamache, P.Eng., M.A.Sc., PMP
Executive Vice President

Tom Montgomery, P.Eng.
Vice President

André Desjardins, P.Eng.
Executive Vice President

Luc Jolicoeur, P.Eng., M.Sc., D.A.P.,
PA LEED BD+C, Executive Vice President

David Murray, P.Eng.
Vice President

Eric Dumouchel, CHRP
Vice President

Steeve L'Heureux, P.Eng.
Executive Vice President

Kelly Yuzdepski, P.Eng.
Regional Vice President, Western Canada

Steeve Fiset, P.Eng., MBA
Executive Vice President

Yves Roland Mondou, P.Eng.
Executive Vice President

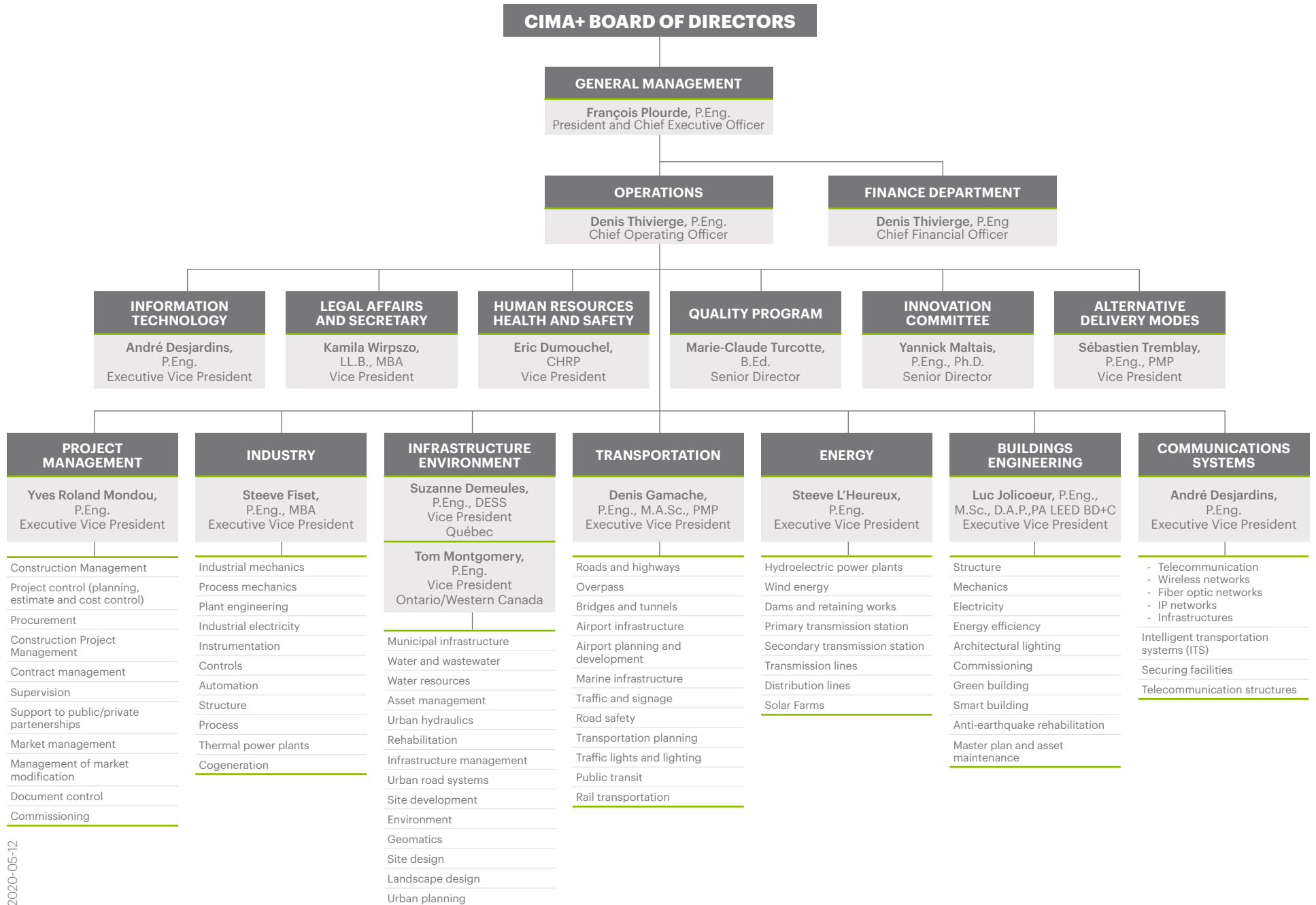
Kamila Wirpszo, LL.B., MBA
Vice President

* Members of the Governance and Ethics Committee are chosen among partners and associate partners, and the selection is subsequently approved by the Board of Directors.

† Josée Morin, Gerard Geoffrion and Réal Plourde are independent members



Functional organizational chart





Business lines and market development

